

Pocket Guide

Individual Animal Import



Individual Animal Import

Individual Animal Import

The first step is to go to the “Weigh Screen” by left-clicking “Stock Performance” and then “Weighing”.

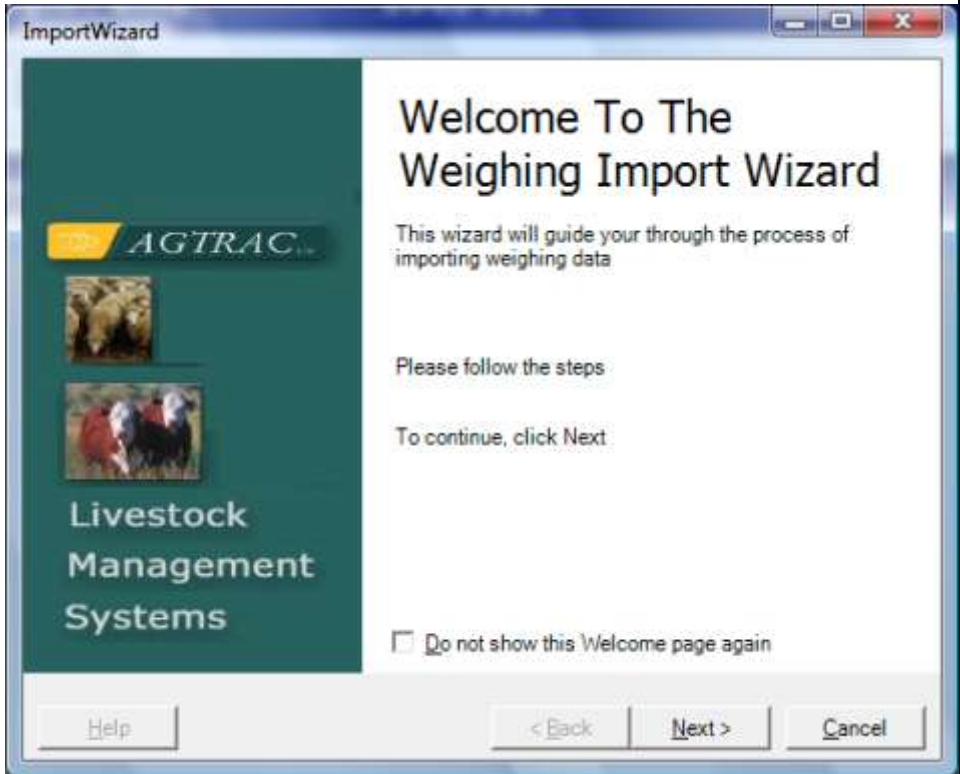
Figure 1: Weighing Screen



The next step left-click the button “Importing Weigh Data” on the bottom left-hand corner of the “Weighing” screen. A pop-up screen labelled “Weighing Import Wizard” will appear.

Individual Animal Import

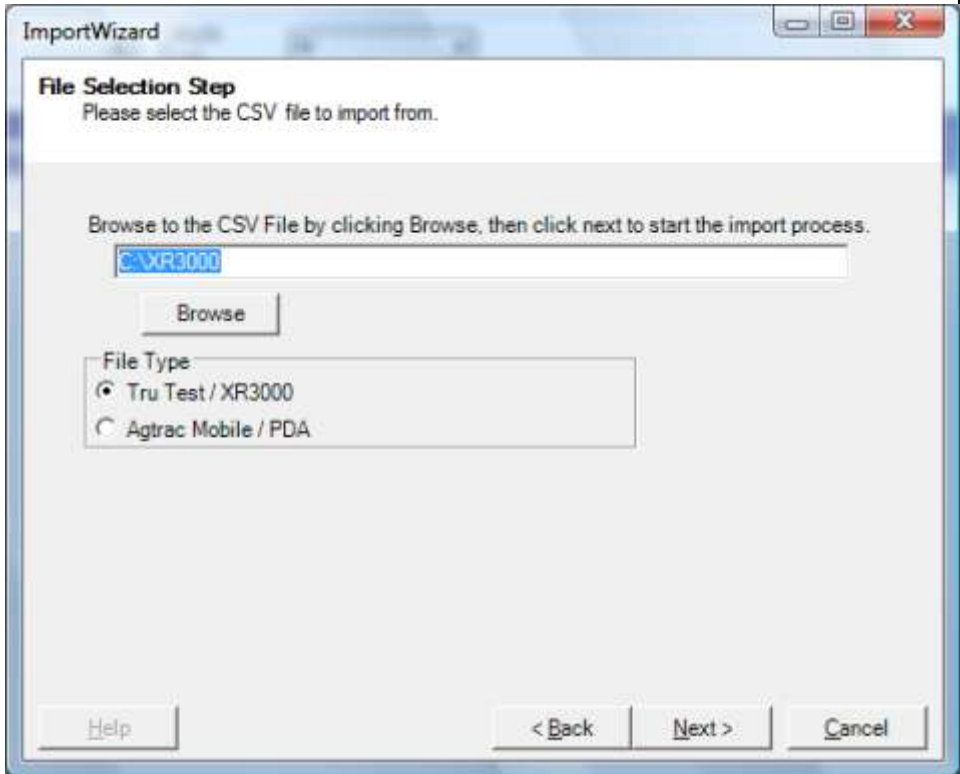
Figure 2: Welcome Screen



Left-click the "Next" button to begin.

Individual Animal Import

Figure 3: File Selection Step



As shown above the "File Selection Step" allows you to select a file to be imported. The first step is to select the file type. This could either be the TruTest XR3000 scales or Agrac PDA file.

Once you have selected the appropriate file type left-click the **"Browse" button to select the file.** Note that default location for the TruTest scales is within the C Drive under either a TruTest or XR3000 folder. Whereas, the PDA files are on the desktop within the folder labelled "FarmHQ Data".

Individual Animal Import

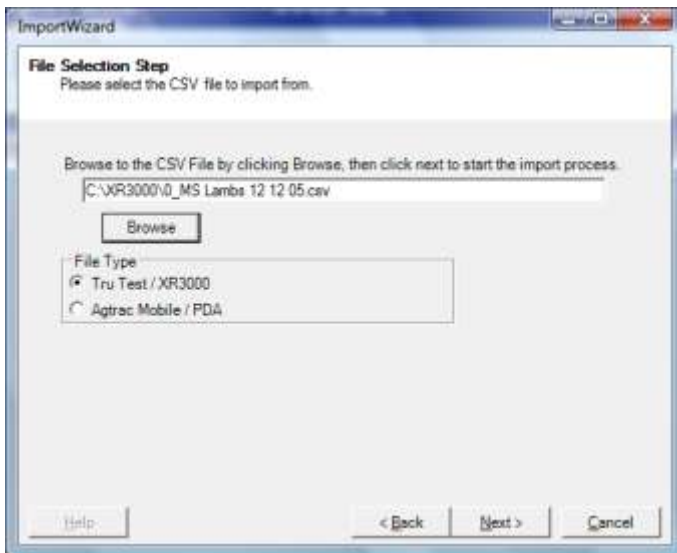
Left-click "Open" on the bottom left-hand corner of the "Windows Explorer" pop-up.

Figure 4: Open File



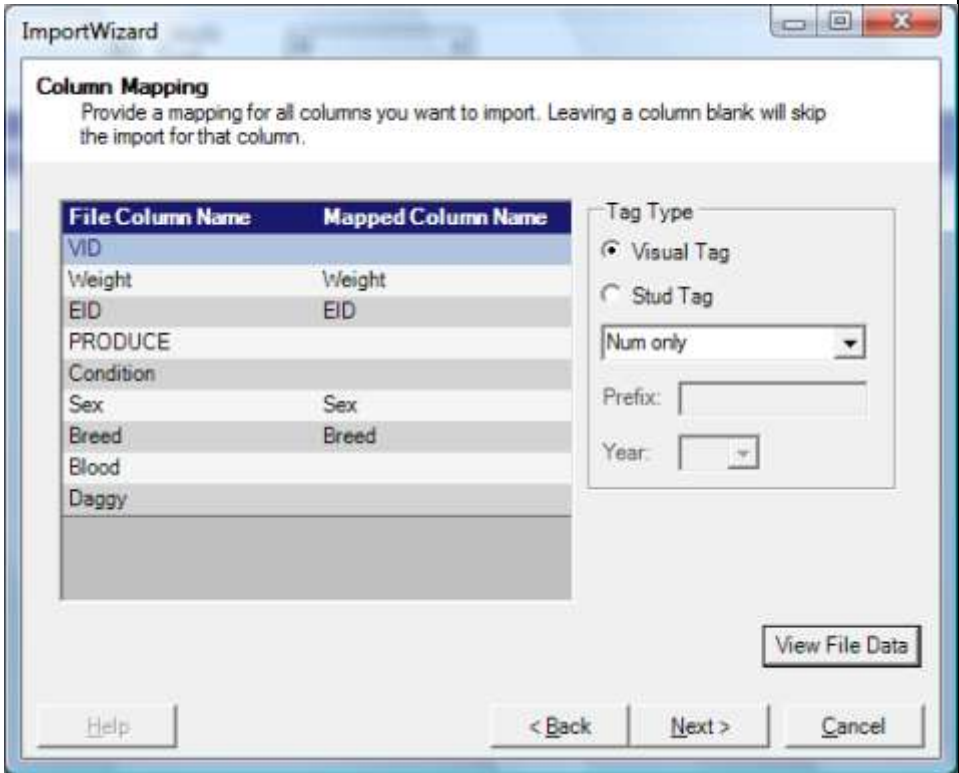
As shown below you will now see the file location in the box above the "Browse button". Left-click the "Next" button.

Figure 5:



Individual Animal Import

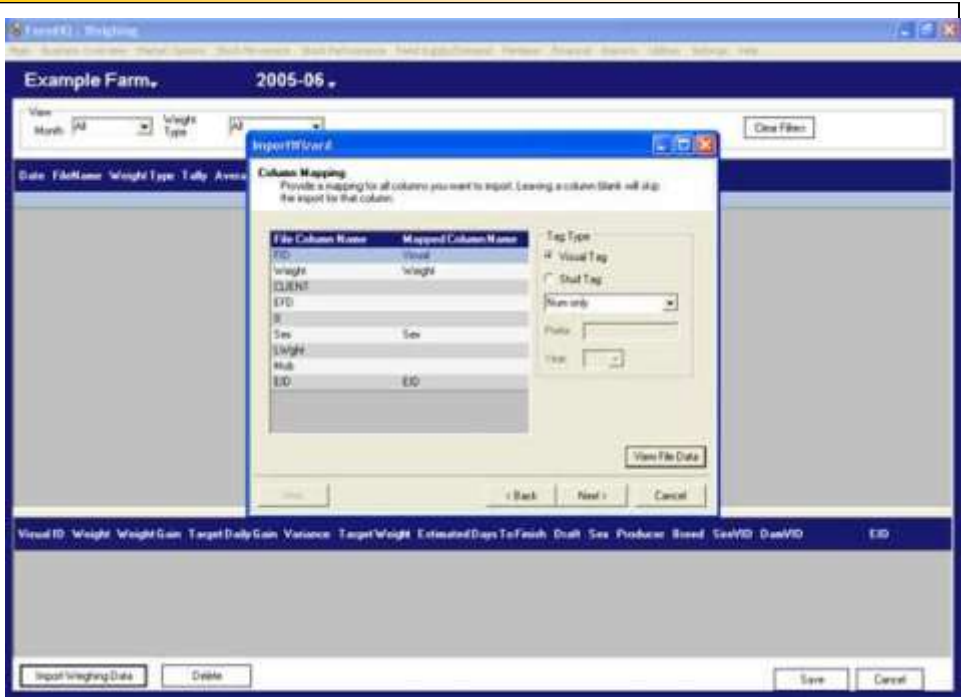
Figure 6: Import File



The next step within the "Importing Weigh Data" wizard is to ensure that FarmHQ recognises the labels used within the selected file. As shown in the photo below FarmHQ has already matched "FID", "Weight", "Sex" and "EID" with "Visual", "Weight", "Sex", and "EID".

Figure 7:

Individual Animal Import

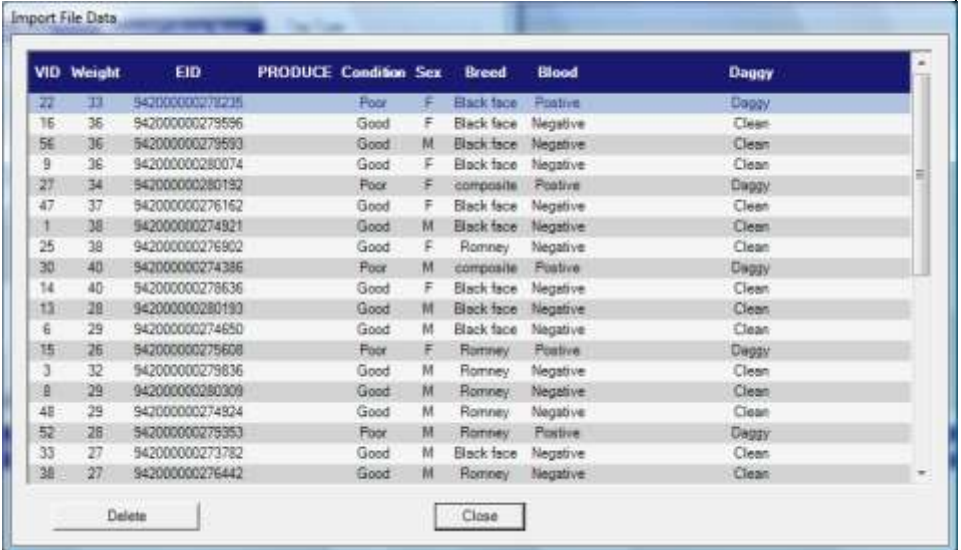


However, as you will see from the above example FarmHQ has not matched "Client". If "Client" is not matched FarmHQ will ignore this value.

Individual Animal Import

Note you can left-click the button labelled "View File Data" on the bottom right-hand corner of the wizard to view the individual animal data within the selected file.

Figure 8: View File Data

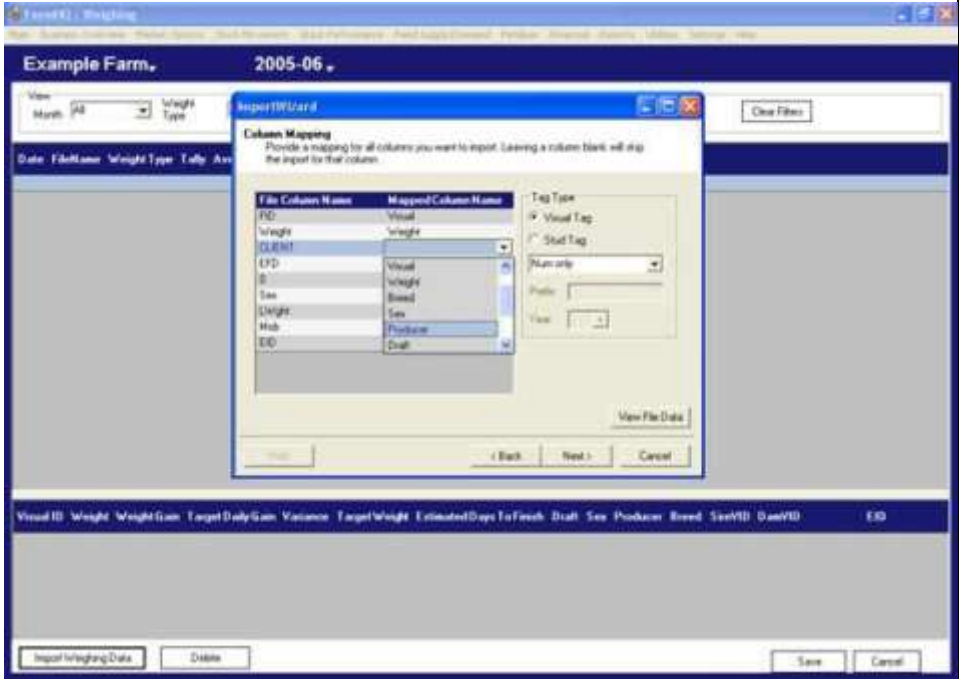


VID	Weight	EID	PRODUCE	Condition	Sex	Breed	Blood	Dagggy
27	33	942000000278225		Poor	F	Black face	Positive	Dagggy
16	36	942000000279596		Good	F	Black face	Negative	Clean
56	36	942000000279593		Good	M	Black face	Negative	Clean
9	36	942000000280074		Good	F	Black face	Negative	Clean
27	34	942000000280192		Poor	F	composite	Positive	Dagggy
47	37	942000000276162		Good	F	Black face	Negative	Clean
1	38	942000000274921		Good	M	Black face	Negative	Clean
25	38	942000000276902		Good	F	Romney	Negative	Clean
30	40	942000000274386		Poor	M	composite	Positive	Dagggy
14	40	942000000278636		Good	F	Black face	Negative	Clean
13	28	942000000280192		Good	M	Black face	Negative	Clean
6	29	942000000274650		Good	M	Black face	Negative	Clean
15	26	942000000279608		Poor	F	Romney	Positive	Dagggy
3	32	942000000279836		Good	M	Romney	Negative	Clean
8	29	942000000280309		Good	M	Romney	Negative	Clean
48	29	942000000274824		Good	M	Romney	Negative	Clean
52	28	942000000279353		Poor	M	Romney	Positive	Dagggy
33	27	942000000273782		Good	M	Black face	Negative	Clean
38	27	942000000276442		Good	M	Romney	Negative	Clean

Individual Animal Import

To create a match within FarmHQ left-click the right-hand column and then select the corresponding value. For the bellow example the user has selected "Producer" to match with "Client".

Figure 9:



When you have finished matching your farm specific values with FarmHQ left-click the "Next" button on the bottom right-hand corner of the wizard.

Individual Animal Import

The next step is to select a "Weigh Type" from the drop-down box.

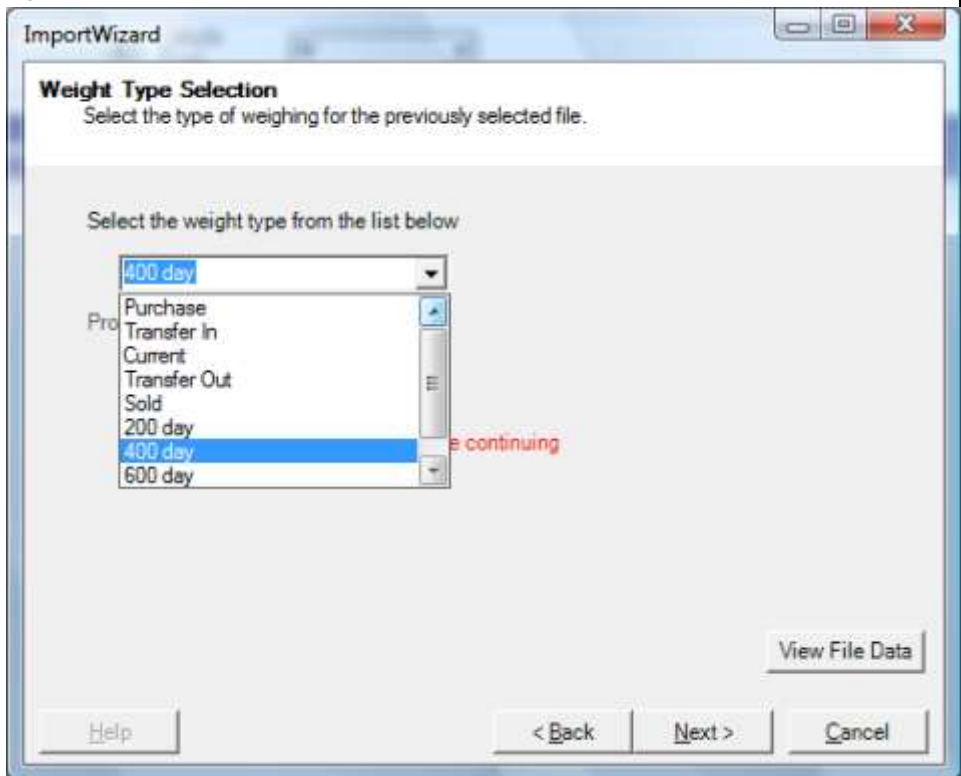
The difference between a "Purchase" and a "Transfer In" is that a cash transaction has occurred for the "Purchase". Whereas, a "Transfer In" could be for a line of grazing heifers which you do not own by graze for someone else.

The selection "Current" is for animals already in the system.

The selection "200 day", "400 day" and "600 day" is for stud breeders who need to analyse comparative performances to calculate their "Estimated Breeding Value".

The "Mating" selection is for farmers who wish to monitor the mating weights of female stock prior to mating.

Figure10:



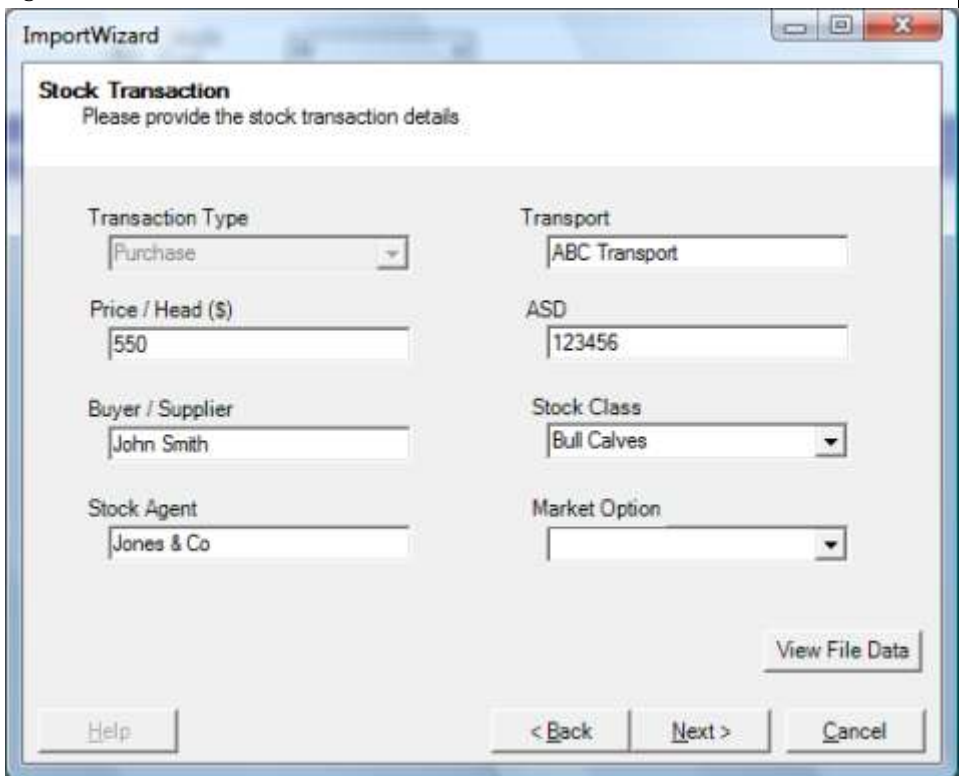
Individual Animal Import

If you select "Purchase" or "Sale" FarmHQ will automatically ask you for transaction details relating to that file. This information will then be automatically entered into the "Stock Transaction" and "Weighing" screens.

The "Market Option" drop-down allows you to match the actual "Purchase" with a market scenario. This allows you to compare the key drivers (actual versus forecasted liveweight gains) and the final outcome (actual versus forecasted profit margins).

To learn how to complete a "Market Option" type "Market Option" into the "Search" box of the "Help Guide".

Figure 11:



The screenshot shows a software window titled "ImportWizard" with a sub-header "Stock Transaction" and the instruction "Please provide the stock transaction details". The form contains the following fields:

Transaction Type	Transport
Purchase	ABC Transport
Price / Head (\$)	ASD
550	123456
Buyer / Supplier	Stock Class
John Smith	Bull Calves
Stock Agent	Market Option
Jones & Co	

At the bottom right is a "View File Data" button. At the bottom are three buttons: "Help", "< Back", "Next >", and "Cancel".

Individual Animal Import

FarmHQ will automatically ask you for treatments applied to the mob within the file.

If you did not apply any animal health treatments left-click the tick box labelled "Skip Animal Health Import Step" and then the "Next" button.

If you did apply treatments fill in the relevant boxes. Note only "Treatments" and "Batches" that you have entered into the main "Animal Health" screen will appear in the drop-downs. If you have not entered the relevant information you will need to left-click the "Cancel" button to enter the data in. See screenshot below.

Figure 12:

ImportWizard

Animal Health
Please provide the animal health details

Skip Animal Health Import Step

Treatment Date: 12/04/2007

Dosage: 2

Treatment (product): Arrest

Person: John

Batch: 13456

View File Data

Help < Back Next > Cancel

When you have finished entering the animal health records Left-click the "Next" button. The file will be imported into the system.

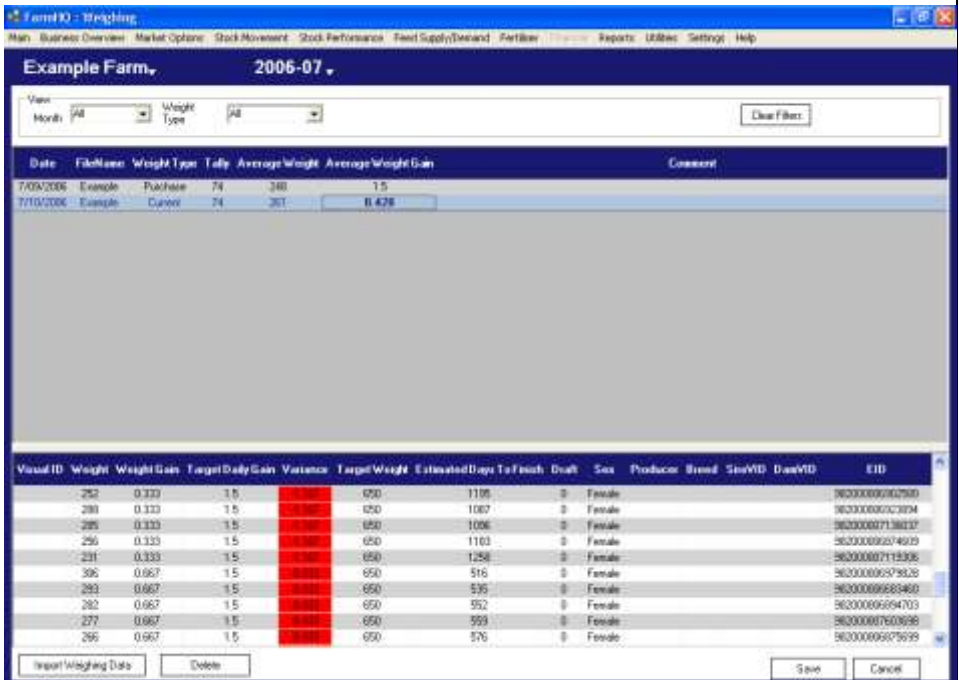
Individual Animal Import

Weigh Screen Display

As shown in the screen shot below the “Weighing” screen will automatically enter a new row for each file import. To display the individual animal data left-click the corresponding row in the top section of the screen.

Note the column labelled “Weight Gain” indicates how fast (kg lwt/day) since the last weighing. Whereas the column labelled “Variance” indicates whether the actual growth rate is greater than the forecasted one. For example, the screen shot below indicates that the animals are growing 1.2kg lwt/day slower than anticipated.

Figure 13:

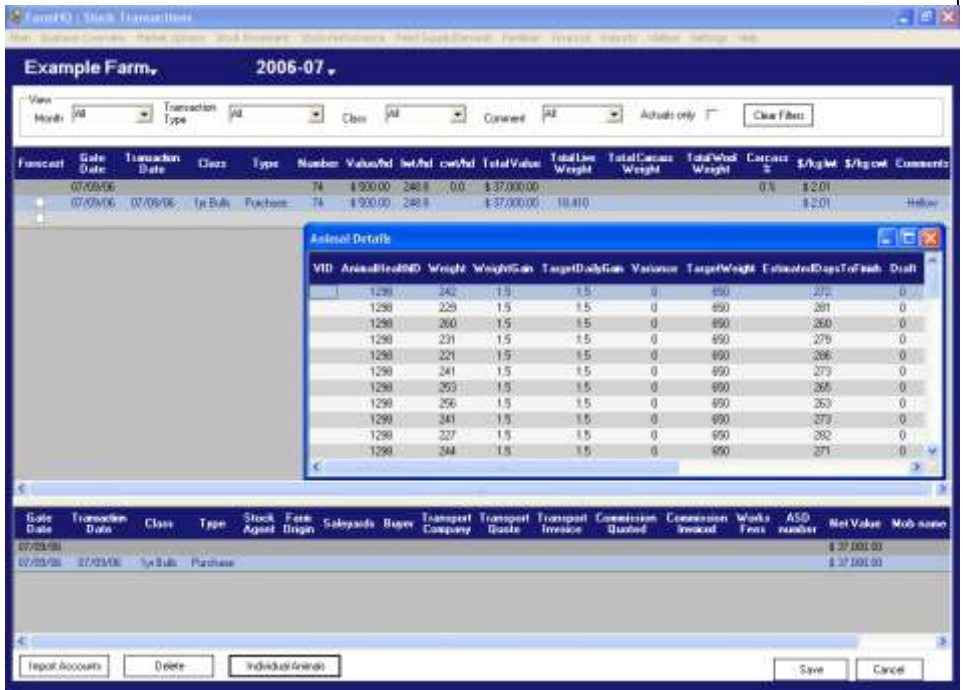


Individual Animal Import

Stock Transaction Screen Display

As shown in the screen shot below the "Stock Transaction" screen will automatically enter a new row for each file import. Note this allows occurs for "Transaction Types" "Purchase" , "Sale", "Transfer In" and "Transfer Out". To display the individual animal data left-click the button labelled "Individual Animals" at the bottom left-hand corner of the screen.

Figure 14:



Individual Animal Import

Animal Health Screen Display

As shown in the screen shot below the "Animal Health" screen will automatically enter a new row for each file import. To display the individual animal data left-click the corresponding row in the top section of the screen.

Figure 15:

