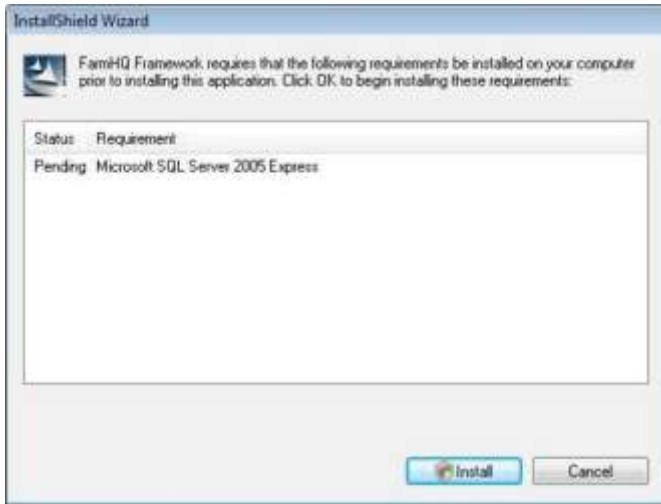


Pocket Guide

FarmHQ Installation

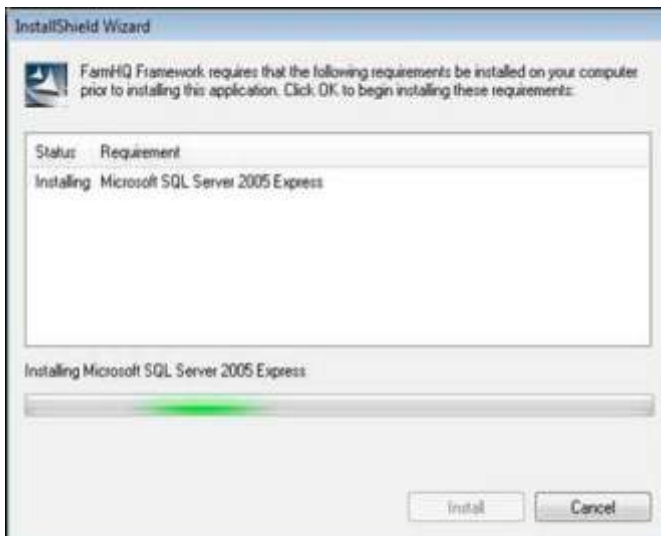


1. Installation



The installer will automatically start once the FarmHQ CD is inserted. Note that some older computers take slightly longer to install.

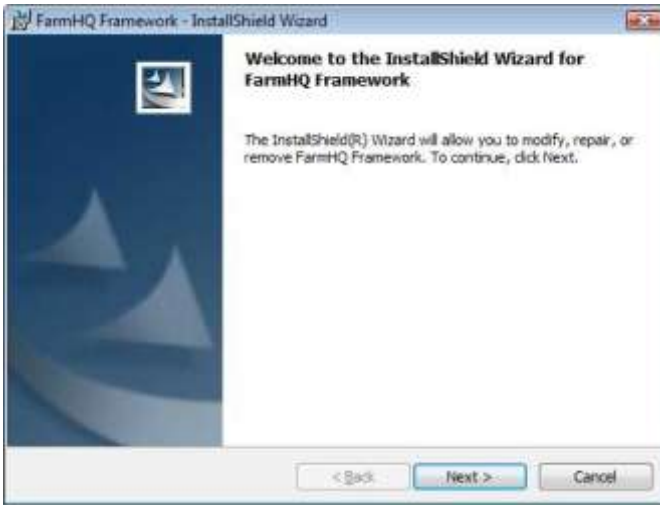
The first step is to install Microsoft SQL Server by left-clicking the “Install” button on the bottom right-hand corner.



The progress bar will update you on progress.

Please note that this phase may take 10-20 minutes depending on your computer’s processing speed.

1. Installation



Once Microsoft SQL Server has finished you will need to install FarmHQ Framework by left-clicking on the “Next” button.

Please note that this phase may take 5-10 minutes depending on your computer’s processing speed.



Once FarmHQ Framework has finished you will need to install “Agrac System” by left-clicking on the “Install” button.

Please note that this phase may take 2-3 minutes depending on your computer’s processing speed.

1. Installation



FarmHQ will automatically start up once the installer has finished.

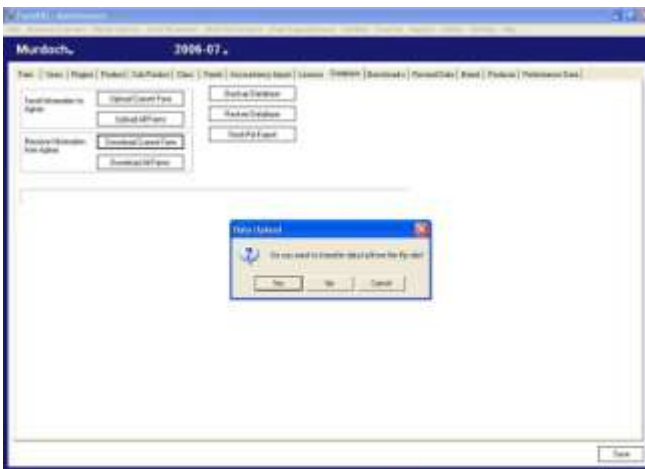
For demo purposes login under username “default” and password “farm” and then left-click “FarmHQ”.

If you have purchased your own version of FarmHQ please read the following chapter “Setup Personal Farm”.

2. Setup Personal Farm



To download your personal “license key” login under username “default” and password “farm” and then left-click “FarmHQ”.

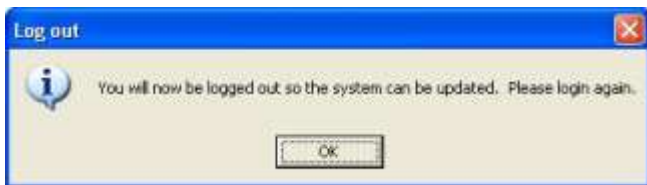


Then go to “Utilities” then “Setup” then “Database”.

Ensure that you are “on-line” so that FarmHQ can access the internet. Then left-click the button labelled “Download Current Farm”. A pop-up will appear asking you “Do you want to transfer data to/from the ftp site?”. Left-click “Yes”.

Depending on the speed of your computer this may take 10-20 minutes.

2. Setup Personal Farm



Left-click "Okay".

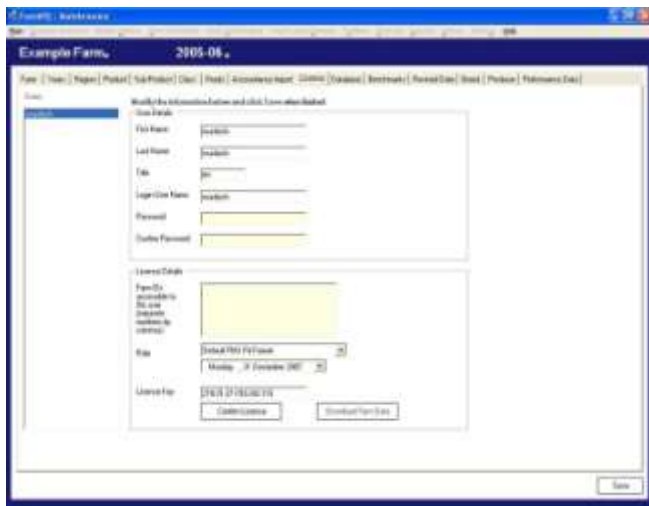


Please login using the "Username" and "Password" supplied by Agrac.

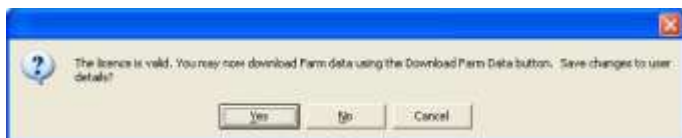
A message will appear "Your license is no longer valid". Left-click "Okay".

You will automatically be taken to the "License" screen.

2. Setup Personal Farm

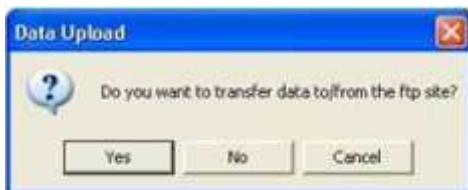


The first step is to left-click your “Users” name on the top left-hand corner (e.g. Murdoch). You will notice your contact details fill the right-hand side of the screen. Then type in your personal “FarmID” emailed to by the Agrac team. Then left-click the “Confirm License” button.



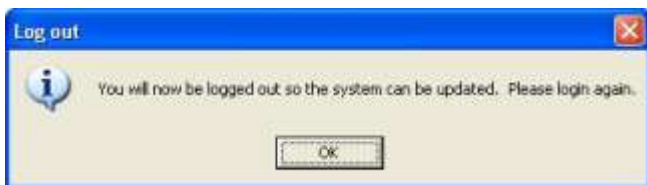
Left-click “Yes” then the “Download Farm Data” button.

2. Setup Personal Farm



When the “Data Upload” pop-up appears you need to left-click the “Yes” button.

Note depending on the size of the farm data and your personal computer’s processing capacity this may take some time.



As shown in Figure 12 when successful FarmHQ will ask you to logout. Left-click “Okay”.

2. Setup Personal Farm



Please login using the “Username” and “Password” supplied by Agrac. You are now ready to use FarmHQ.

FARMHQ

Farm management system

Largest livestock
shipment globally

COMPLETE
TRACEABILITY



www.agtrac.co.nz